

PLATES

Plate-1

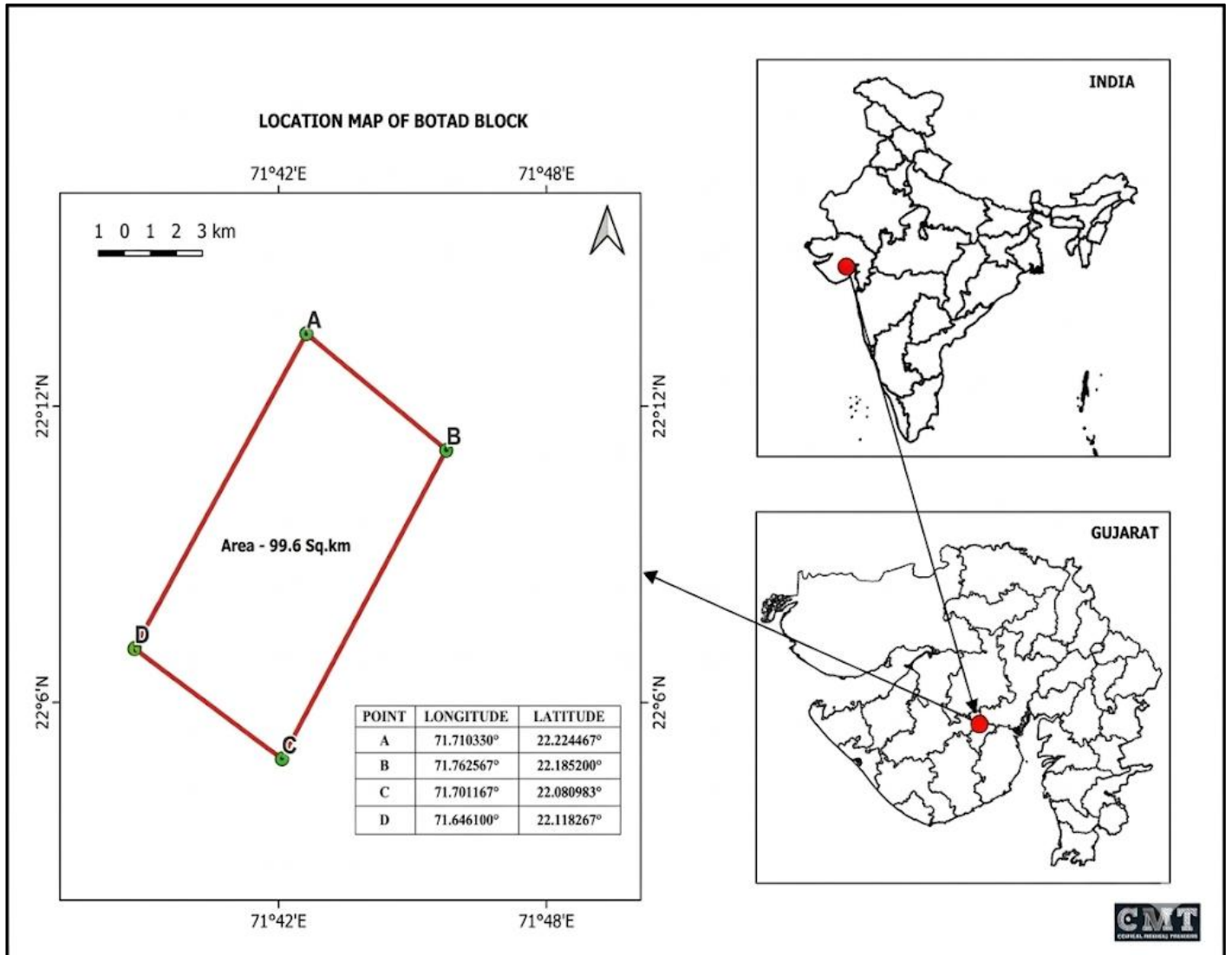


Plate-2

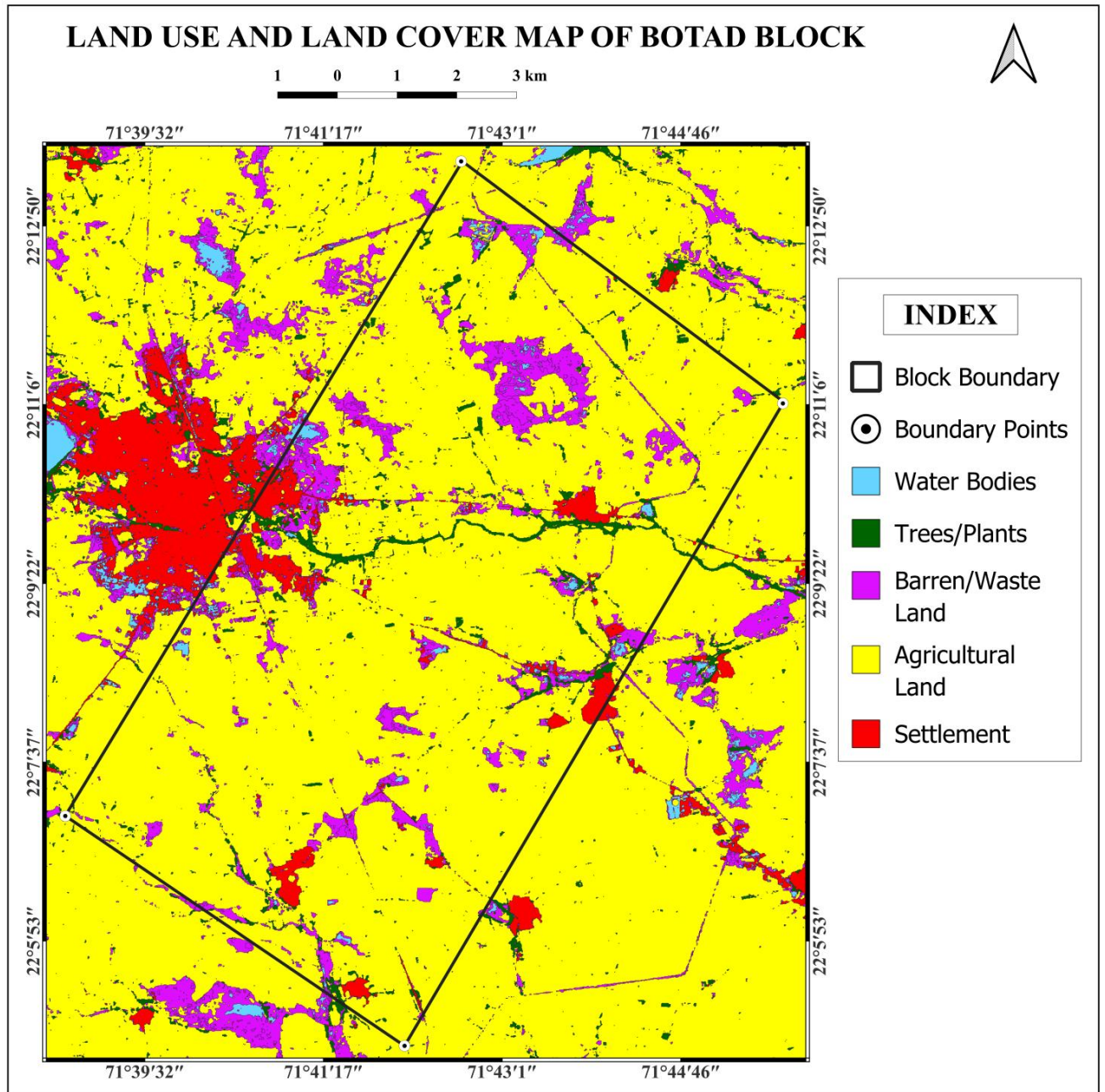


Plate-3

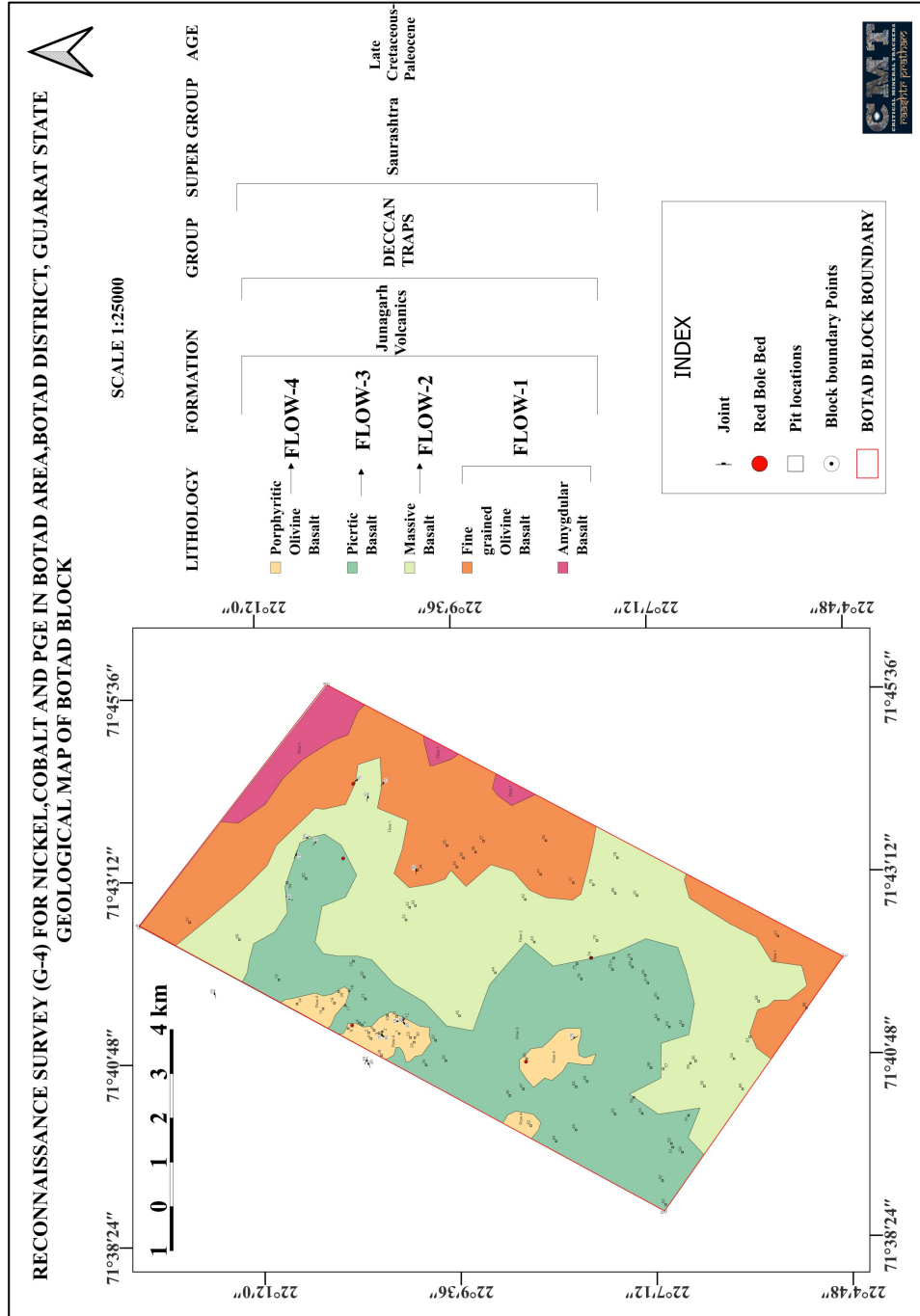


Plate-4

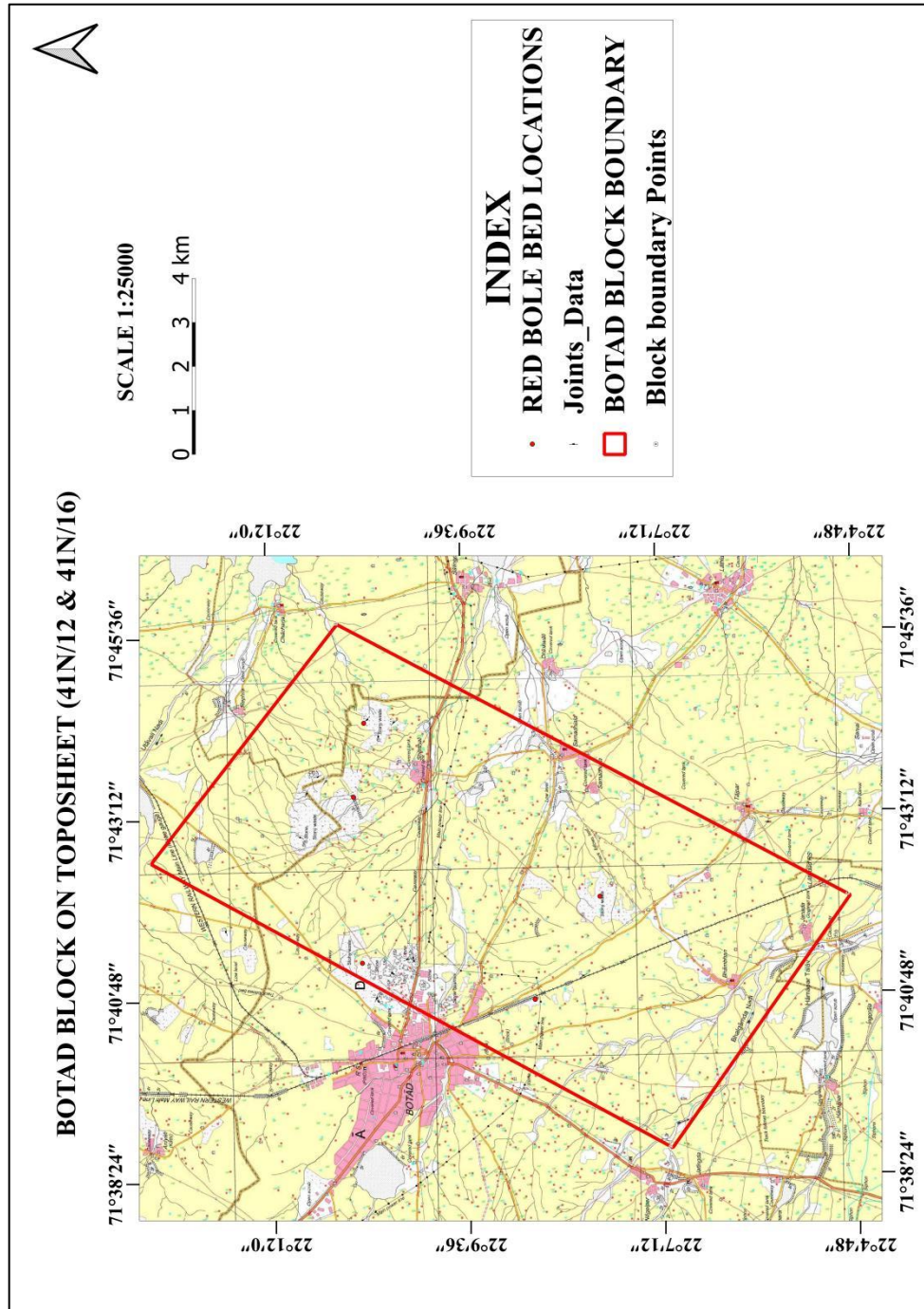


Plate-5

RED BOLE BED LOCATIONS

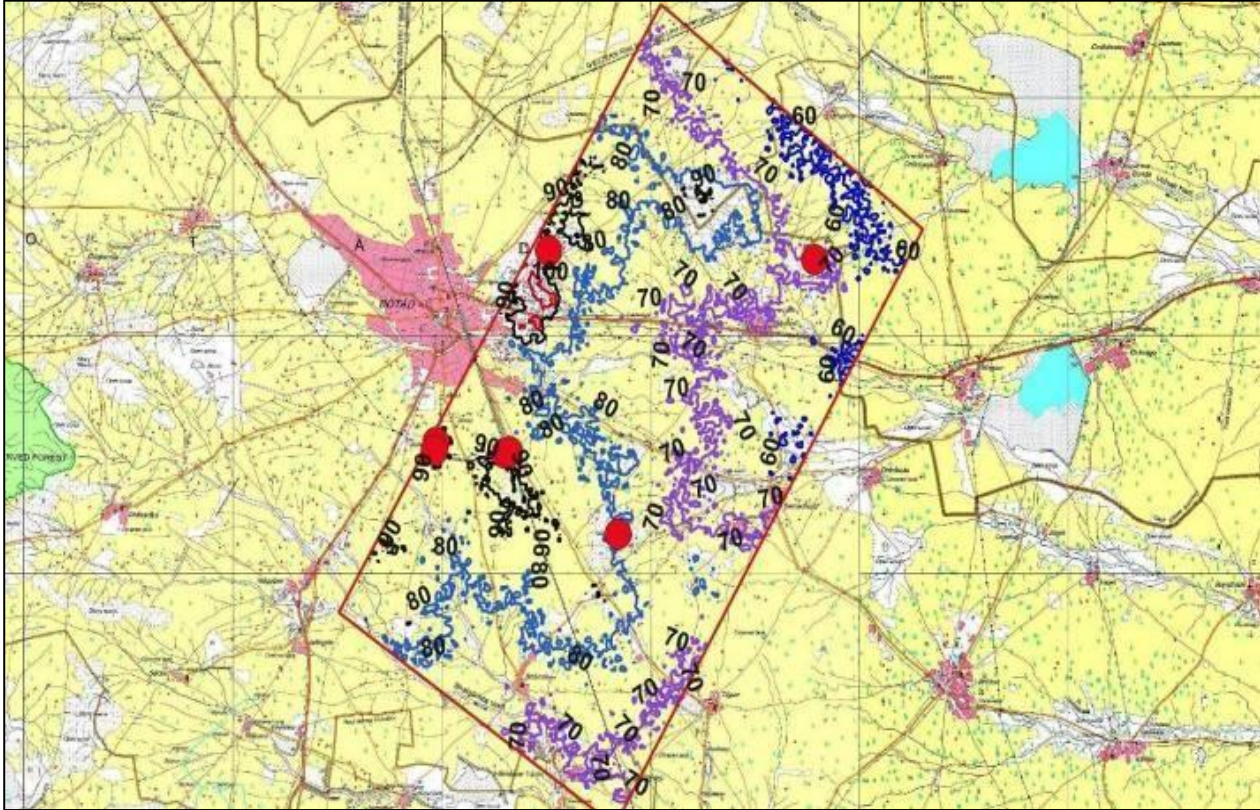


Plate no 5

Plate-6

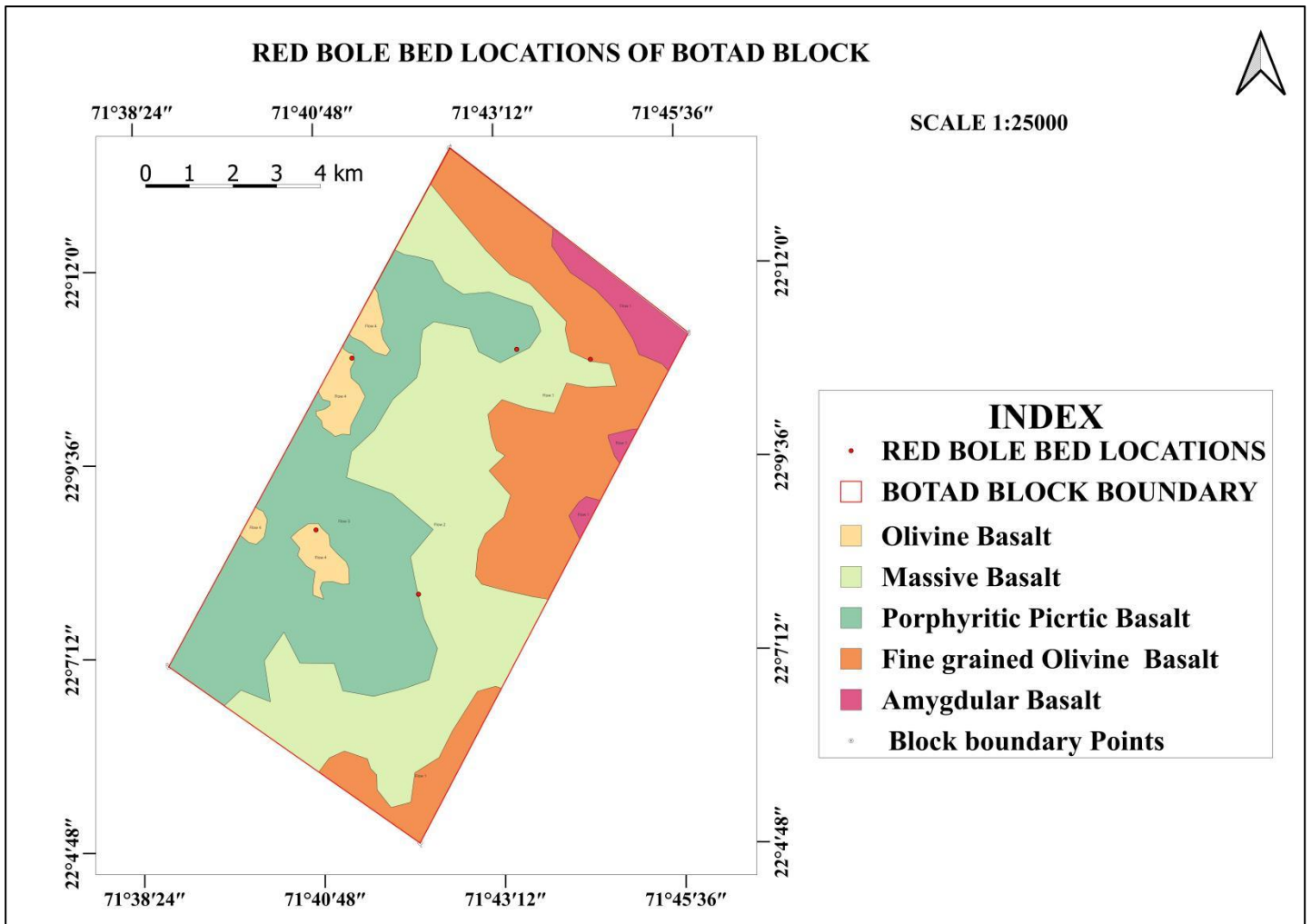


Plate-7

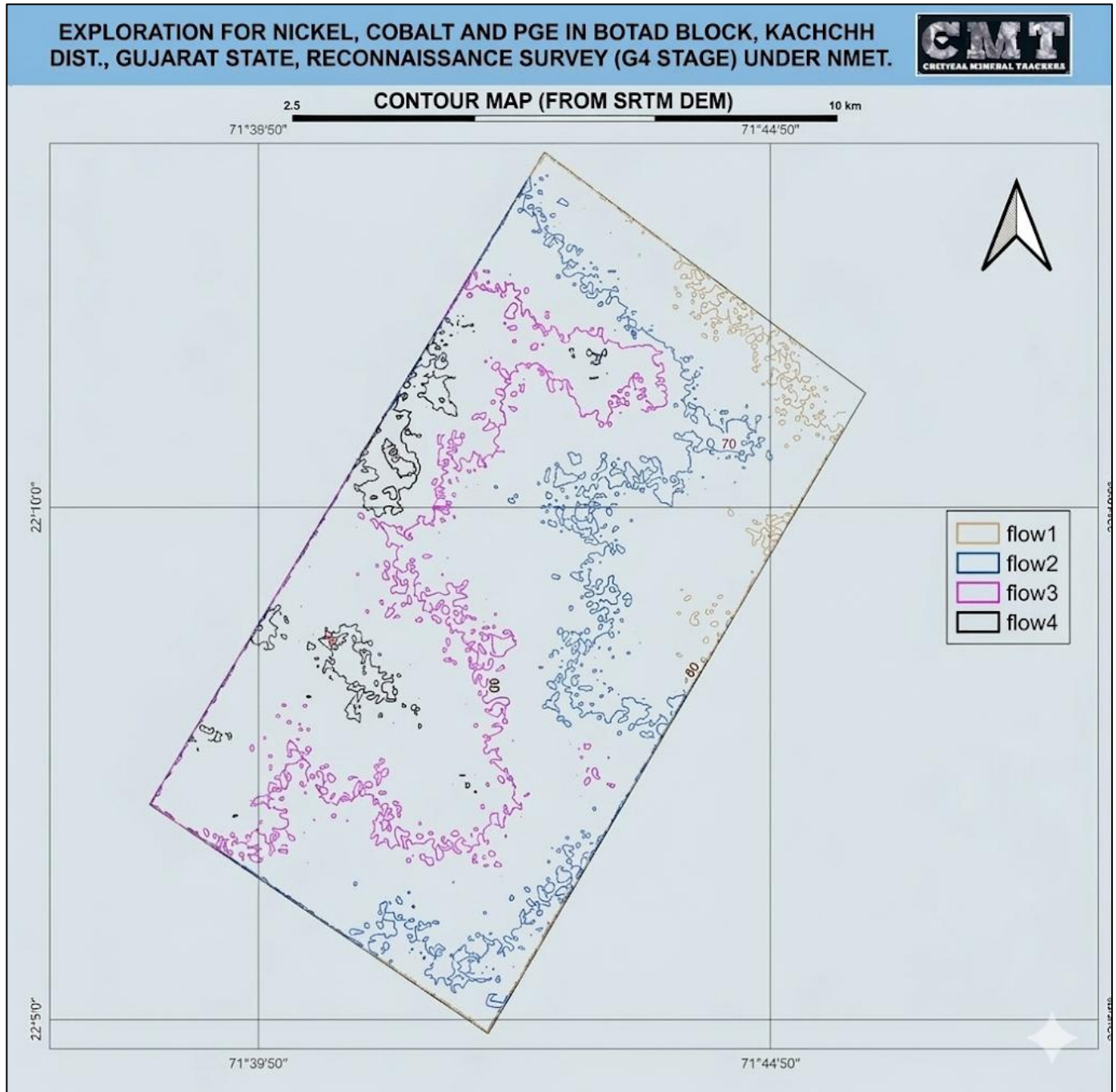


Plate-8

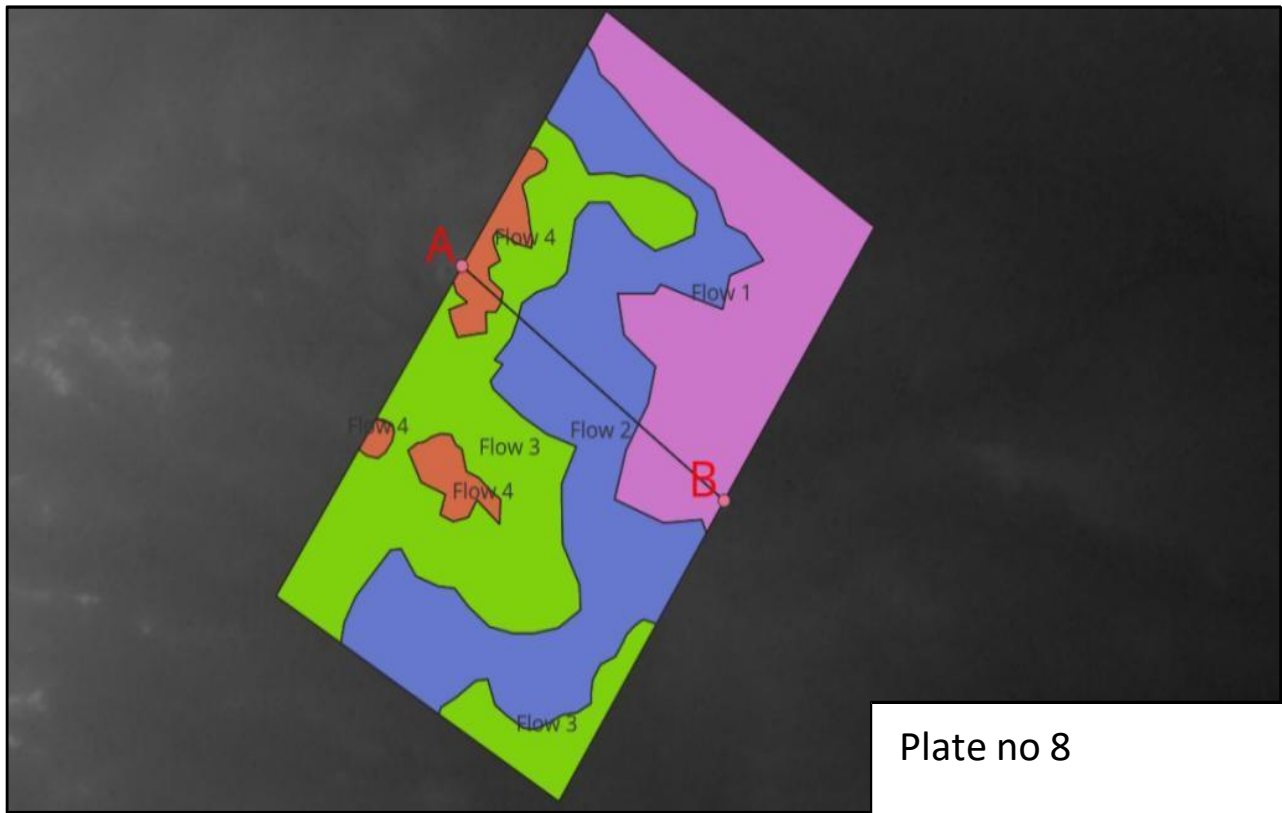


Plate no 8

Fig showing A-B cross section of the block

Plate-9

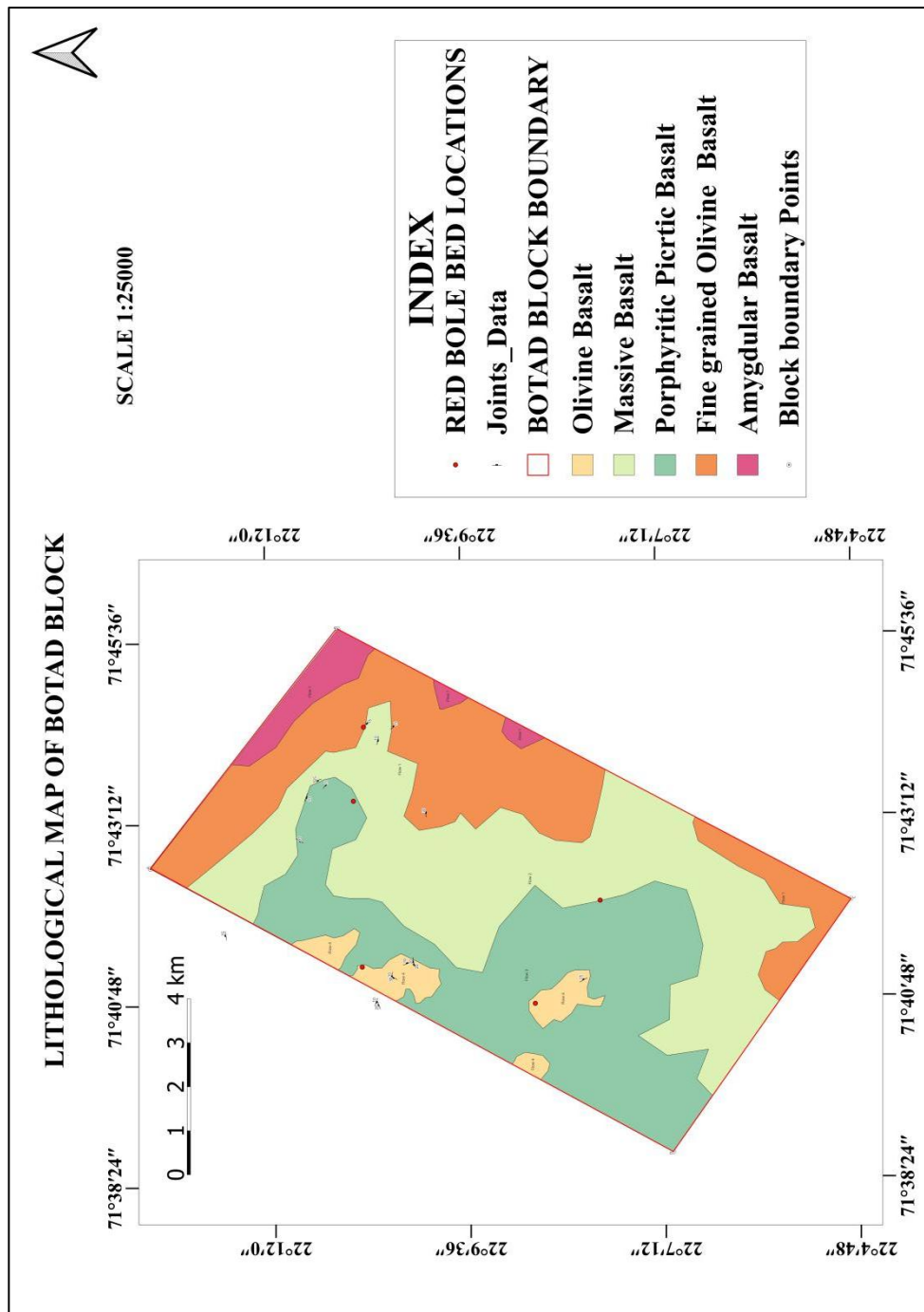


Plate-10

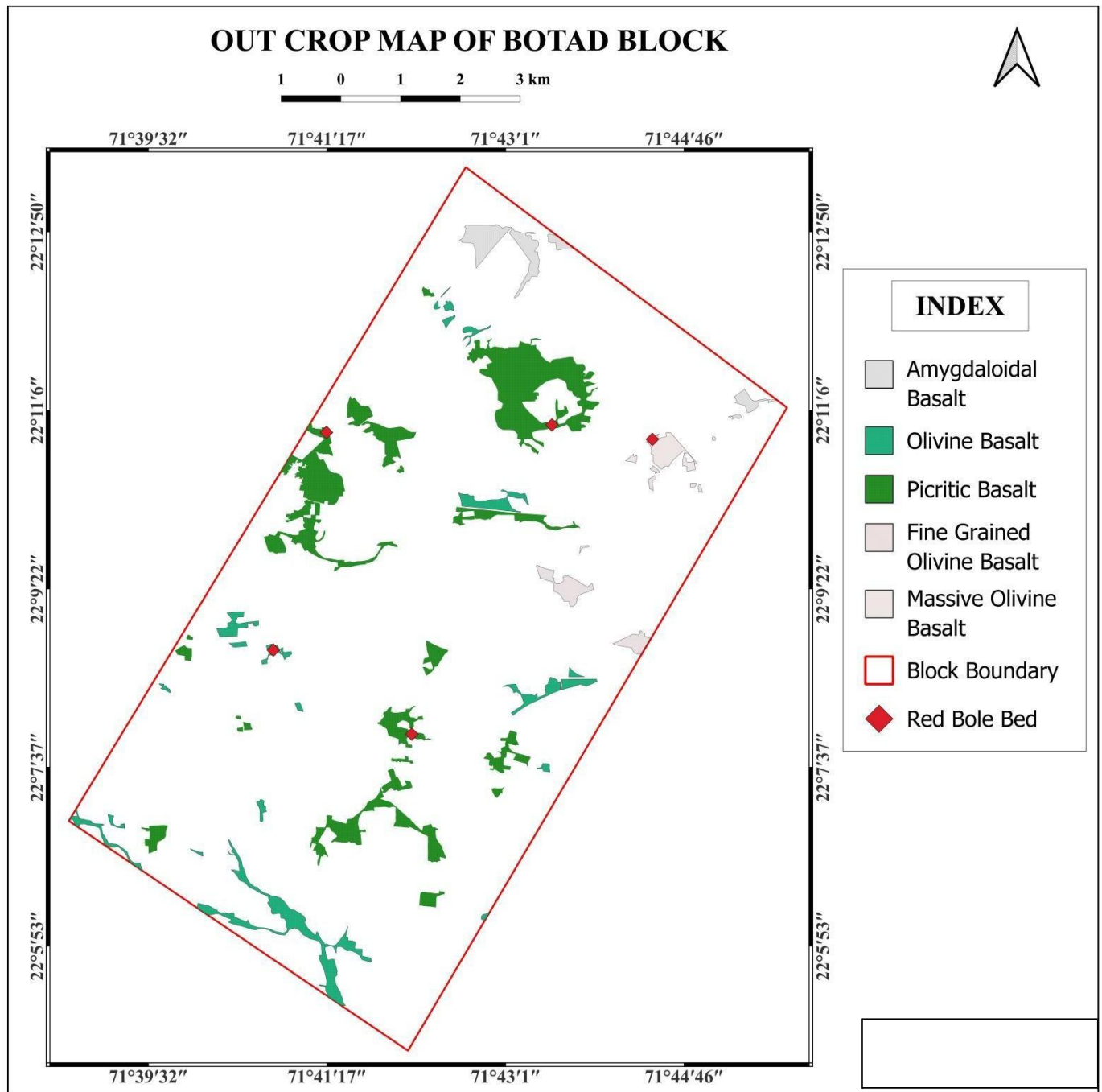


Plate-11

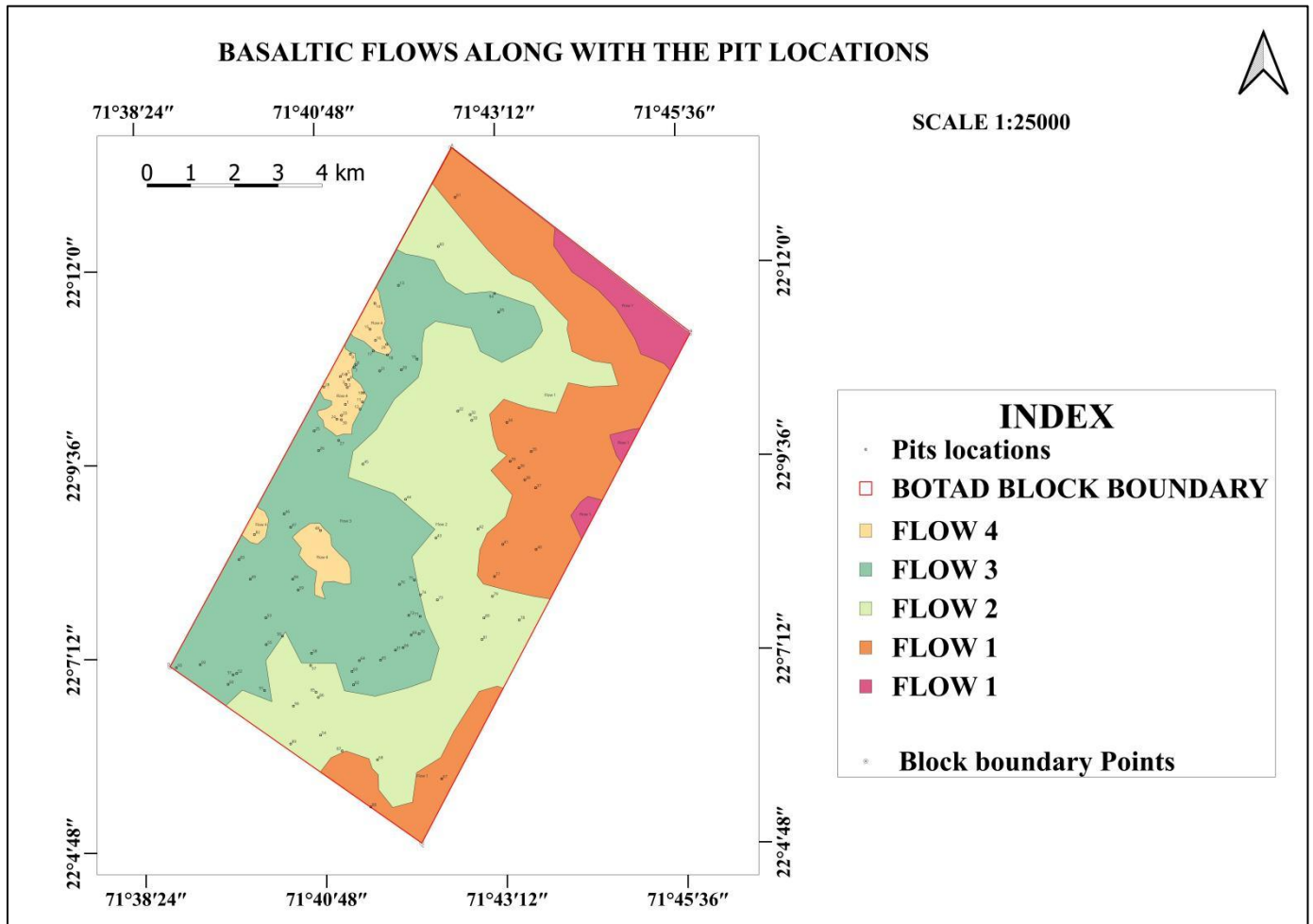


Plate-12

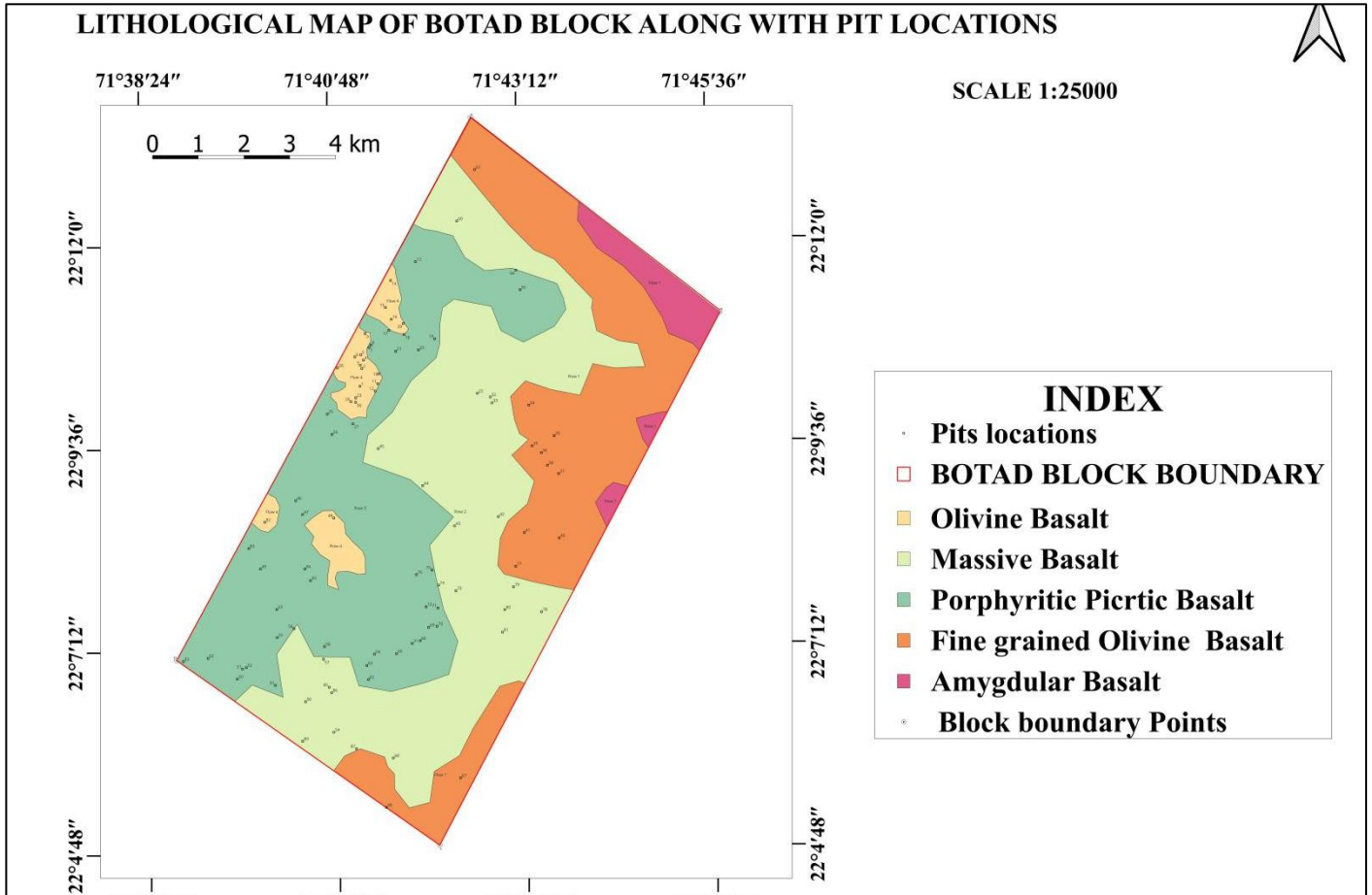


Plate-13

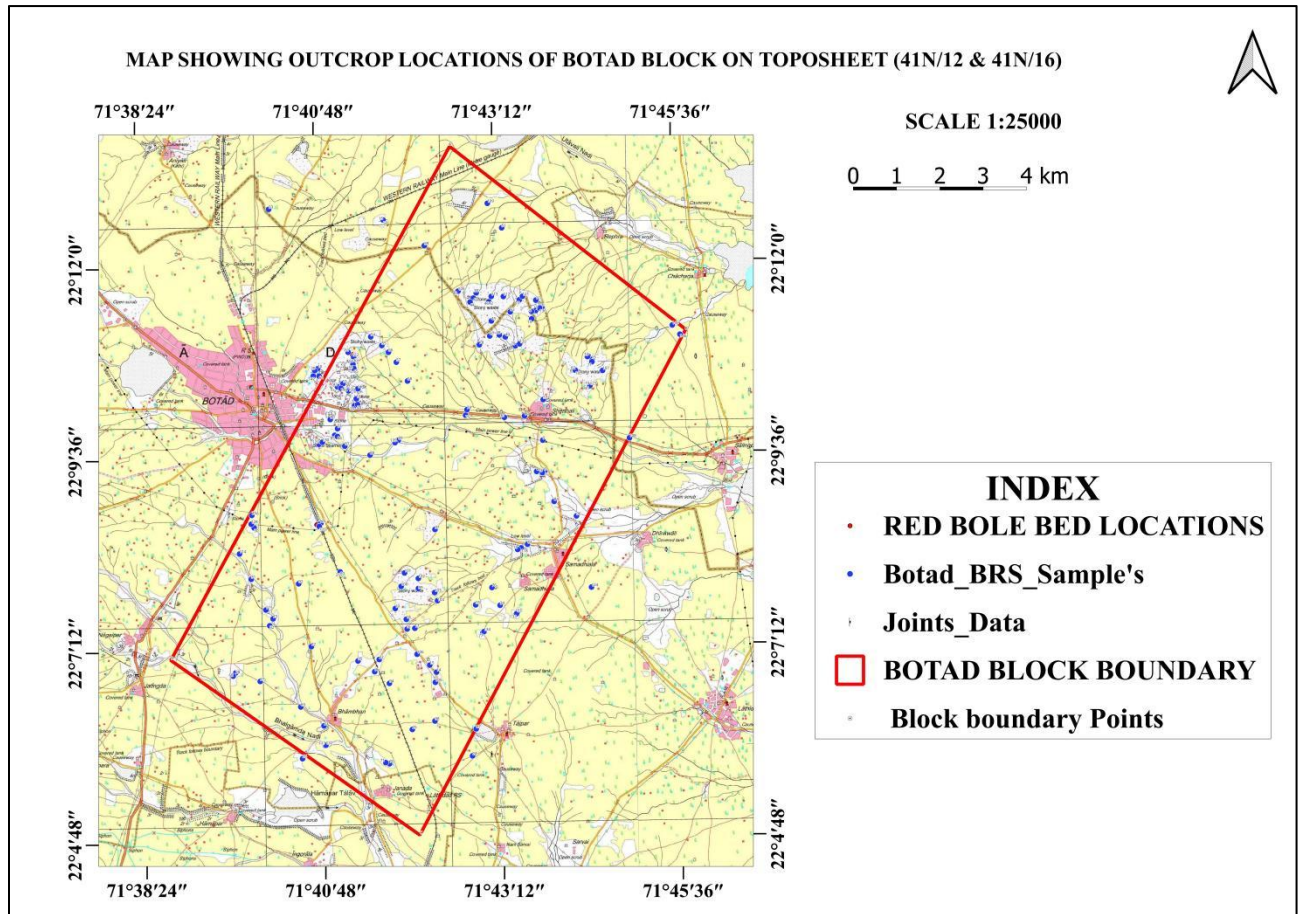


Plate-14

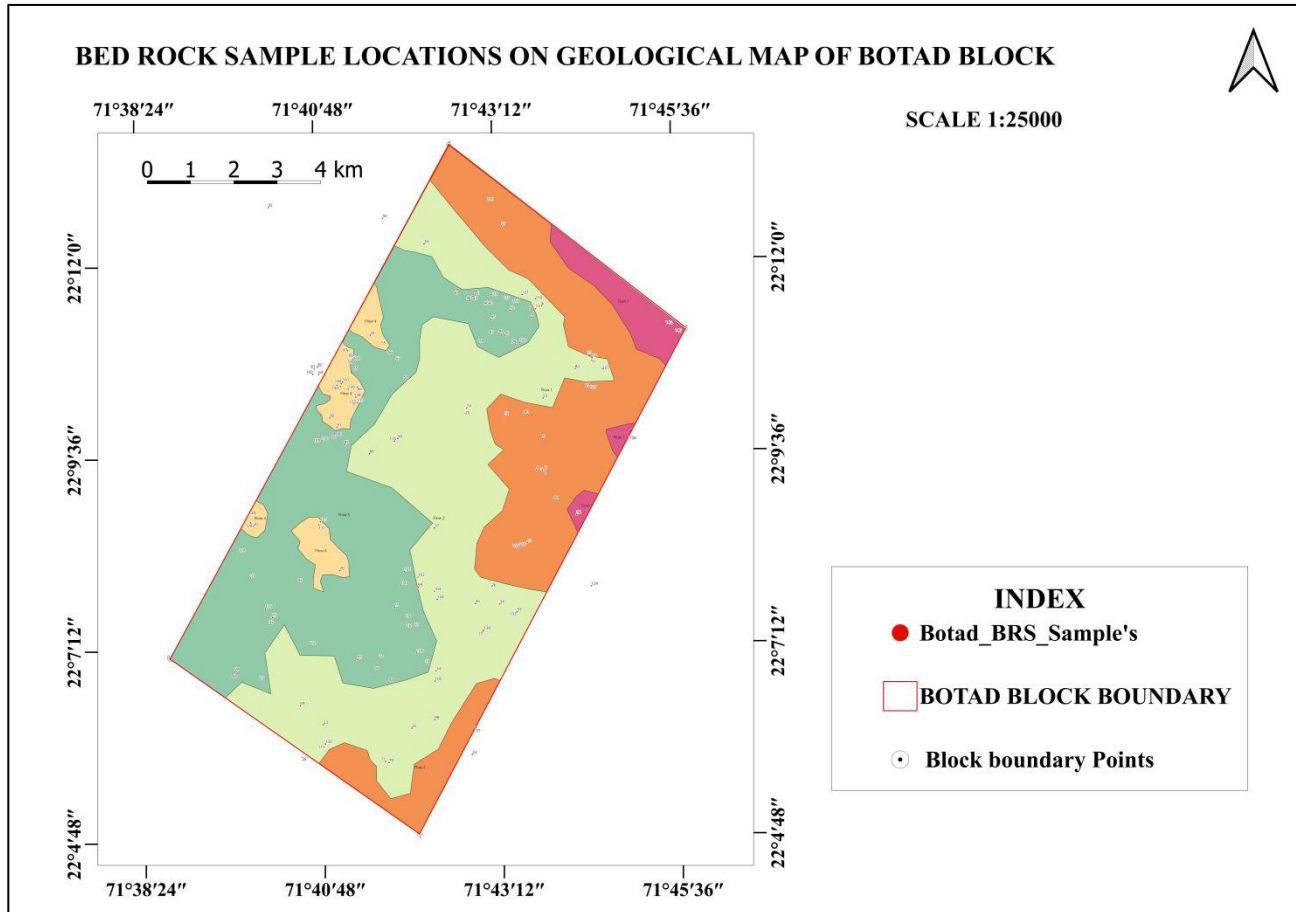


Plate-15

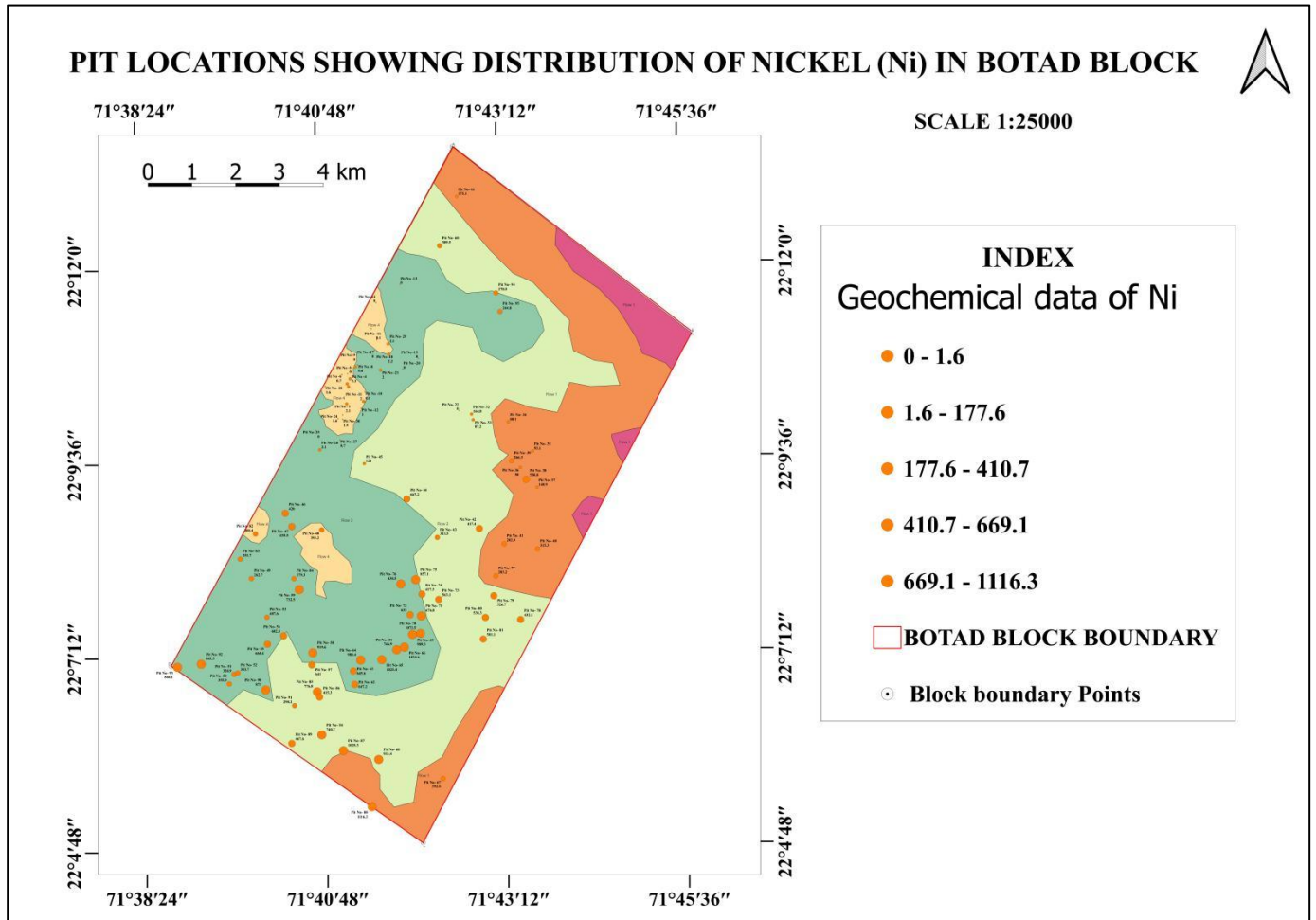


Plate-16

PIT LOCATIONS SHOWING DISTRIBUTION OF NIOBIUM (Nb) IN BOTAD BLOCK

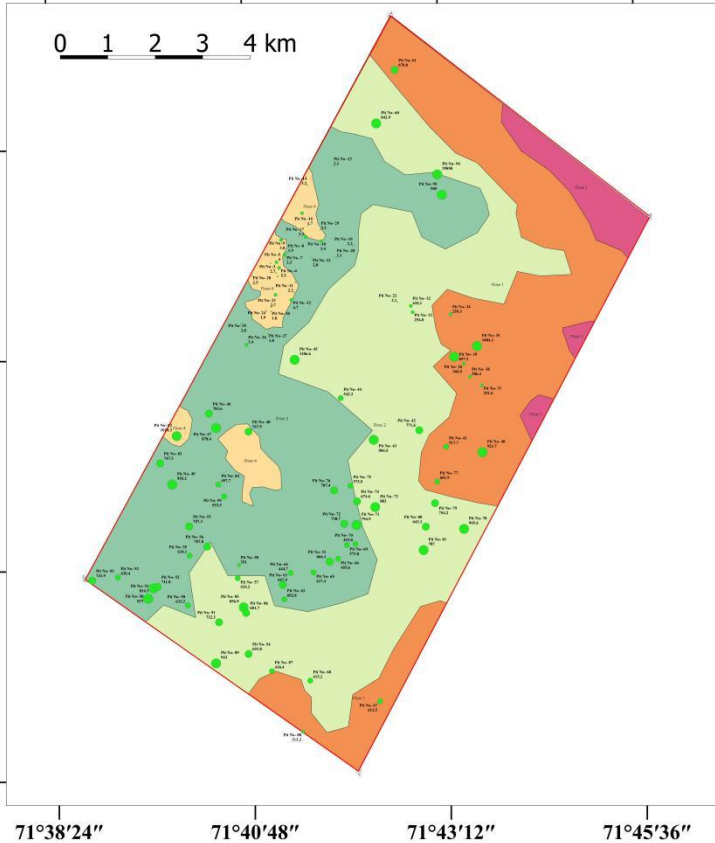


71°38'24" 71°40'48" 71°43'12" 71°45'36"

SCALE 1:25000

0 1 2 3 4 km

22°12'0"
22°9'36"
22°7'12"
22°4'48"



INDEX Geochemical data of Nb

- 1.1 - 3.2
- 3.2 - 413.2
- 413.2 - 637.7
- 637.7 - 784.3
- 784.3 - 39850

□ BOTAD BLOCK BOUNDARY

○ Block boundary Points

Plate-17

PIT LOCATIONS SHOWING DISTRIBUTION OF CHROMIUM (Cr) IN BOTAD BLOCK

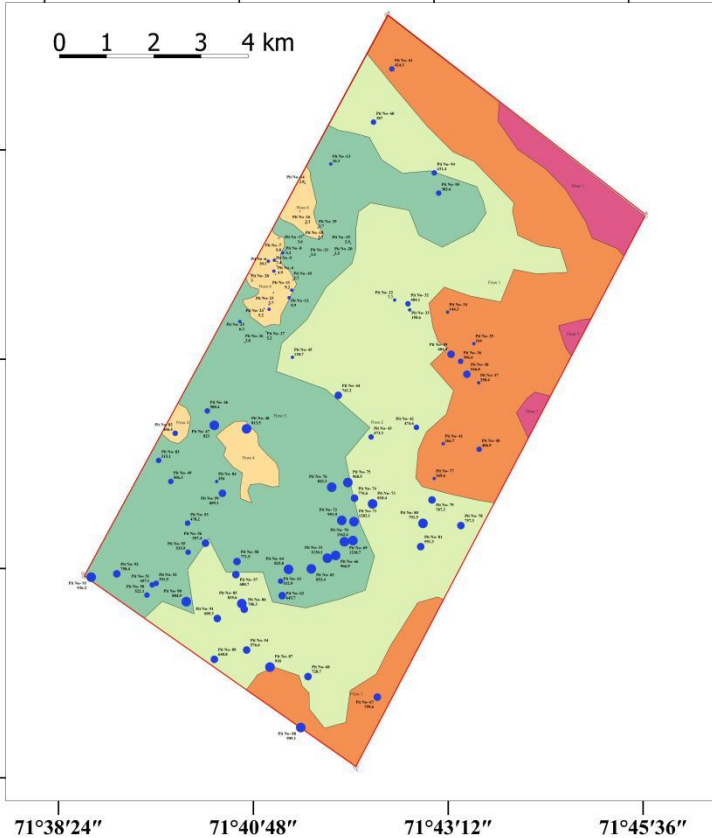


71°38'24" 71°40'48" 71°43'12" 71°45'36"

SCALE 1:25000

0 1 2 3 4 km

22°12'0"
22°9'36"
22°7'12"
22°4'48"



INDEX Geochemical data of Cr

- 1.2 - 5.2
- 5.2 - 377.4
- 377.4 - 540.3
- 540.3 - 788.1
- 788.1 - 1282.1

□ BOTAD BLOCK BOUNDARY

○ Block boundary Points

Plate-18

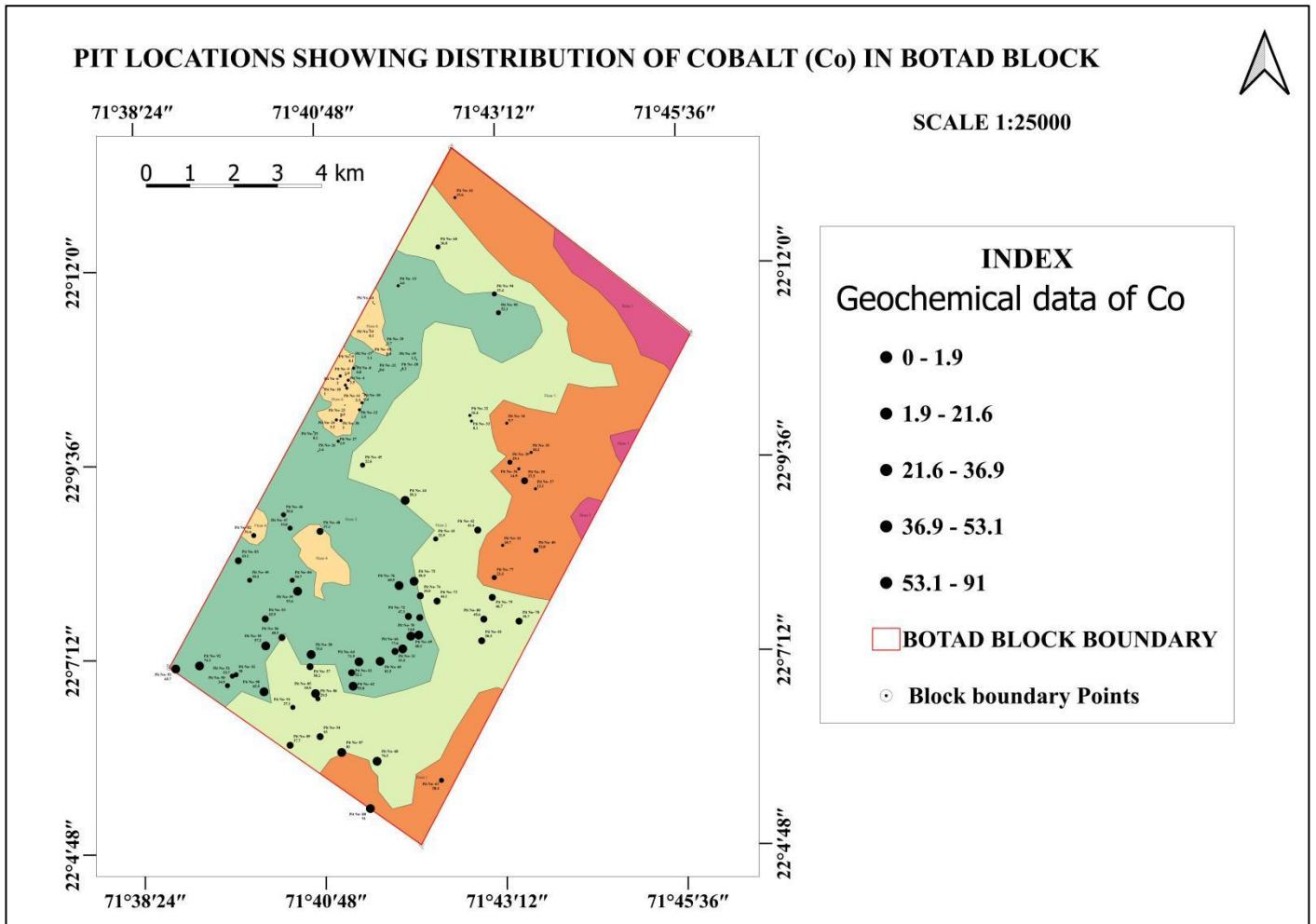


Plate-19

